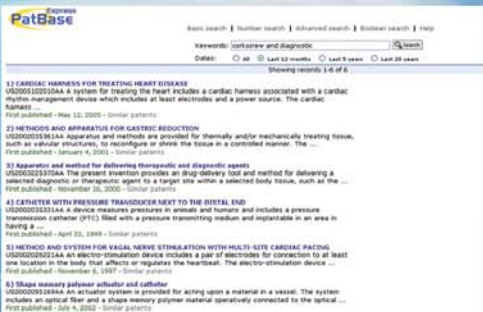




Priority
Assignee (s)
Inventor (s)
Designated states
Family
Publication number
Publication date
Application number
Application date



PatBase Express is an ideal service for searching patent information broadly throughout an organisation, designed for engineers, chemists, R&D and Business Analysts.

Available for unlimited use by a single user, a group of users or as an Intranet service, **PatBase Express** draws on the entire original PatBase data, comprising 30 million patent families and over 20 million searchable full-text patent specifications.



Patent Information for the Enterprise

PatBase Express offers:

- A simple and intuitive way of investigating patents by subject, competitor or number
- Patent documents, already grouped into inventions, avoiding duplicated information and saving time
- A suite of in-built search aids and tools, assisting users to locate the right information

minesoft
www.minesoft.com



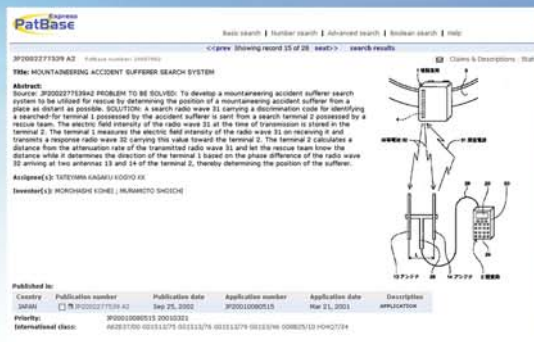
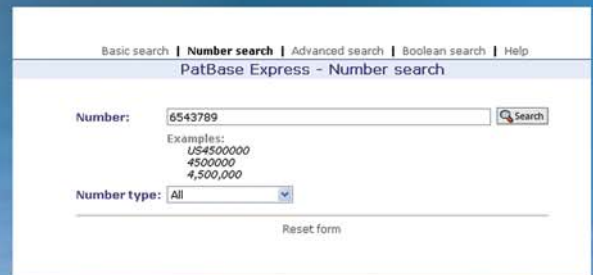
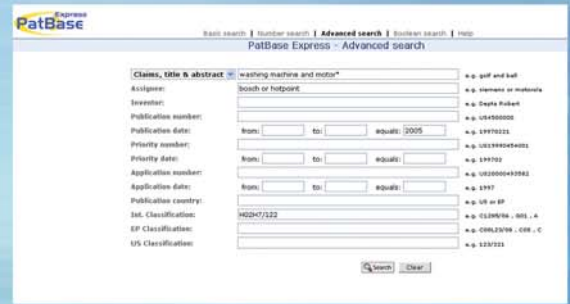
PatBase has been developed in partnership with www.rws.com

Minesoft Ltd, 100 South Worple Way, London SW14 8ND, UK
Tel: +44 (0)20 8404 0651 Fax: +44 (0)20 8404 0681
Email: patbase@minesoft.com
www.patbaseexpress.com

Germany: 0800 1 81 14 06
Italy: 02 670 96 99
USA: 1866 745 3621
Japan: 0352 32 0647
Australia: +61 2 9818 6111
Korea: +82 2 587 2303

- Fast scanning through results for rapid identification of interesting documents
- Easy navigation and browsing through patent documents, including technical diagrams and chemical structures
- Further research and examination of selected relevant patents
- Display of original documents and access to legal data, for added convenience

Used in combination, PatBase products offer a comprehensive solution for corporate IP information needs.



PatBase Express search tools include smart software and algorithms for identifying patents of relevance based on keyword entries, locating documents by a single number, claims analysis and more, providing an easy-to-use and convenient solution.