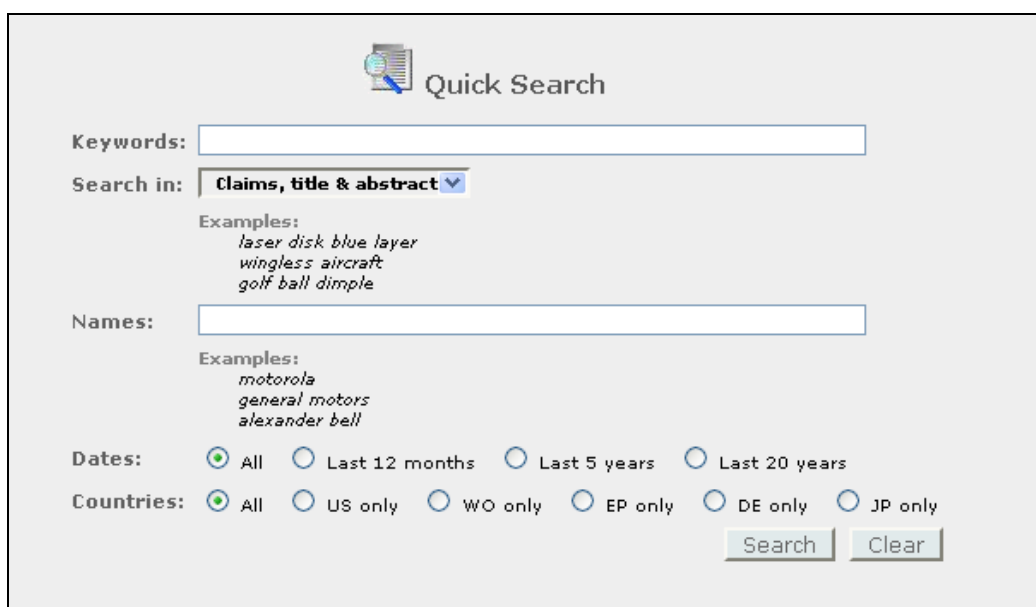




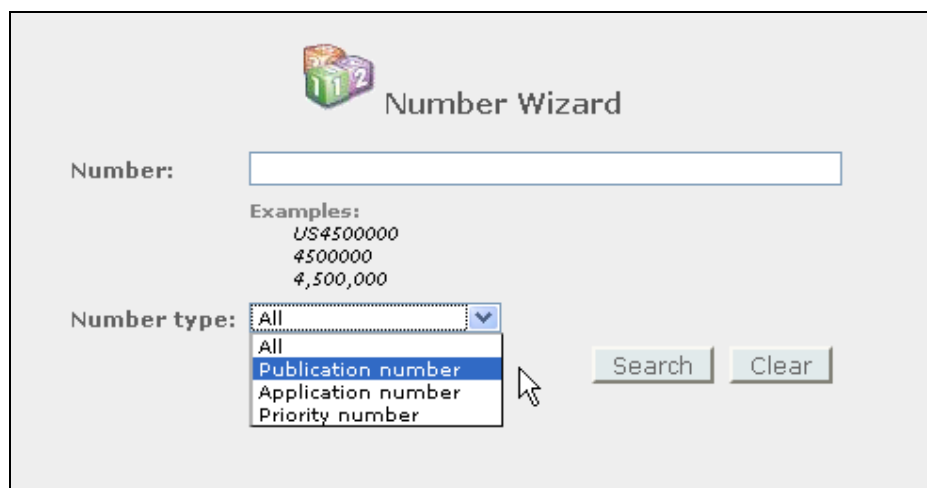
## PatBase Enhancements (May 2009)

### **New 'Quick' and 'Number' Search forms**

Search forms have been added to perform a Quick keyword search as well as a number search. The number search allows users to enter the number with or without a country code and also offers the option to search across the application, priority and publication number fields. This is particularly useful when you do not know exactly what type of number you are searching for.



The Quick Search form is titled "Quick Search" with a magnifying glass icon. It includes a "Keywords:" text input field. Below it is a "Search in:" dropdown menu currently set to "Claims, title & abstract". Underneath the dropdown are "Examples:" of search terms: "laser disk blue layer", "wingless aircraft", and "golf ball dimple". There is a "Names:" text input field with "Examples:" of names: "motorola", "general motors", and "alexander bell". At the bottom, there are "Dates:" and "Countries:" sections, each with radio button options. The "Dates:" options are "All" (selected), "Last 12 months", "Last 5 years", and "Last 20 years". The "Countries:" options are "All" (selected), "US only", "WO only", "EP only", "DE only", and "JP only". "Search" and "Clear" buttons are at the bottom right.



The Number Wizard form is titled "Number Wizard" with a 3D number cube icon. It features a "Number:" text input field. Below it are "Examples:" of patent numbers: "US4500000", "4500000", and "4,500,000". The "Number type:" dropdown menu is open, showing options: "All" (selected), "Publication number", "Application number", and "Priority number". A mouse cursor is pointing at the "Publication number" option. "Search" and "Clear" buttons are located at the bottom right.

## New Alert Update Options

New update options have been added to the Alert Function:

Now it is possible to run alerts to find out:

## The first time a PatBase family receives English Text

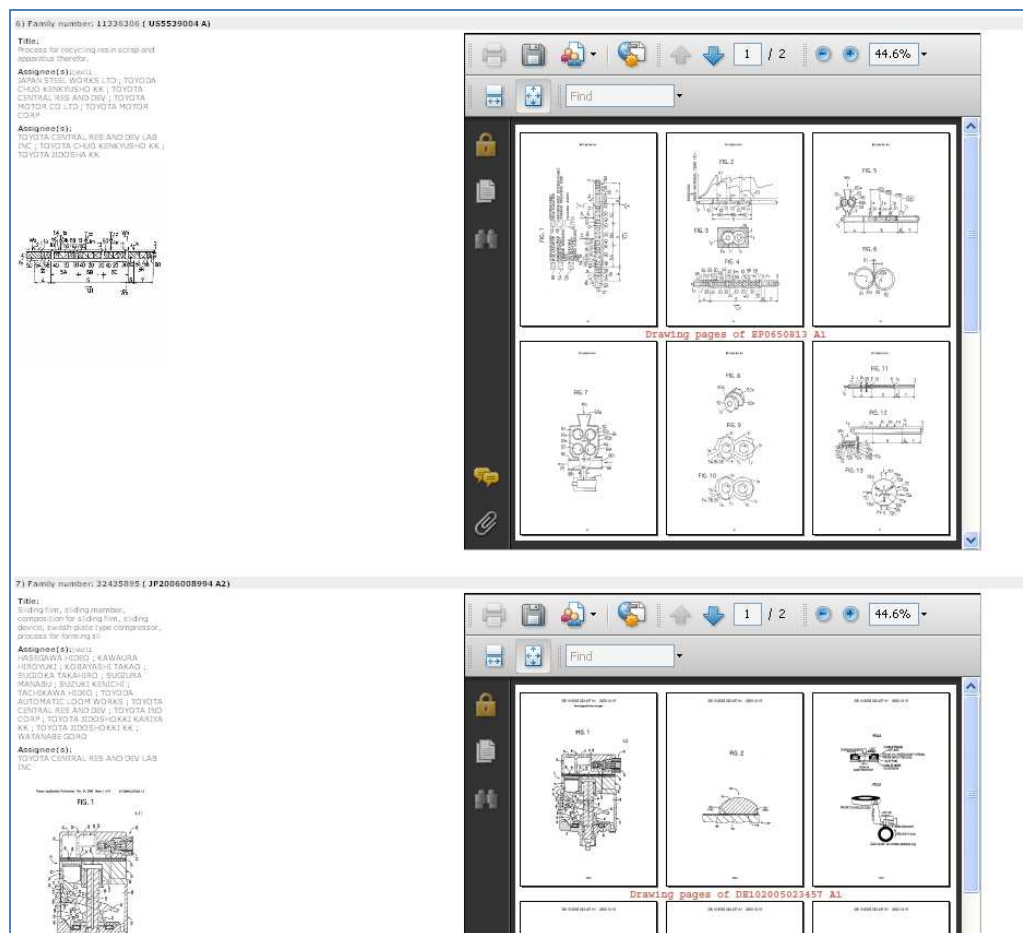
The first time an Assignee is assigned to a PatBase family

### The first time an IPC is assigned to a PatBase family

These new options enable users to choose to be alerted to new PatBase families where some data may arrive later, e.g. an official English abstract for Chinese or Japanese publications, or IPC's assigned late to PCT documents by WIPO.

## New Image display Format

The new Image display formats allow users to review just the PatBase clipped Image and Mosaics from their results set. This is ideal to review large numbers of images directly on the screen.



## Japanese & Korean Assignee names now also available

PatBase now displays the original assignee names in non-Latin characters for Japanese and Korean assignee names, as well as the transliterated versions. This is useful to determine the assignee names for very recent publications from those countries.


Users can cut and paste the non-Latin assignee names into the non-Latin search form to search the original assignee name. This can result in additional hits from the most recent publications, as well as being a great help to Japanese and Korean language searchers.


TOYOTA MOTOR CORP ; TOYOTA MOTOR CO LTD  
[EN] TOYOTA JIDOSHA K K TOYOTA ; TOYOTA JIDOSHA KK ; TOYOTA JIDOSHA KABUSHIKI KAISHA ; TOYOTA MOTOR CO  
[JP] トヨタ自動車株式会社  
YAHAGI HIDEO ; HIDEO YAHAGI  
[JP] 矢作 秀夫

## Enhancements to the PatBase analysis functions

The graphic displays on all analysis screens have been improved. The Class analysis function allows Users to sort the results by class and see the frequency breakdown by class, group and subgroup.

**Statistical analysis (Search 5):** 1-50 of 13,742 matching the query: "golf ball"

 **TOP 50 International class**

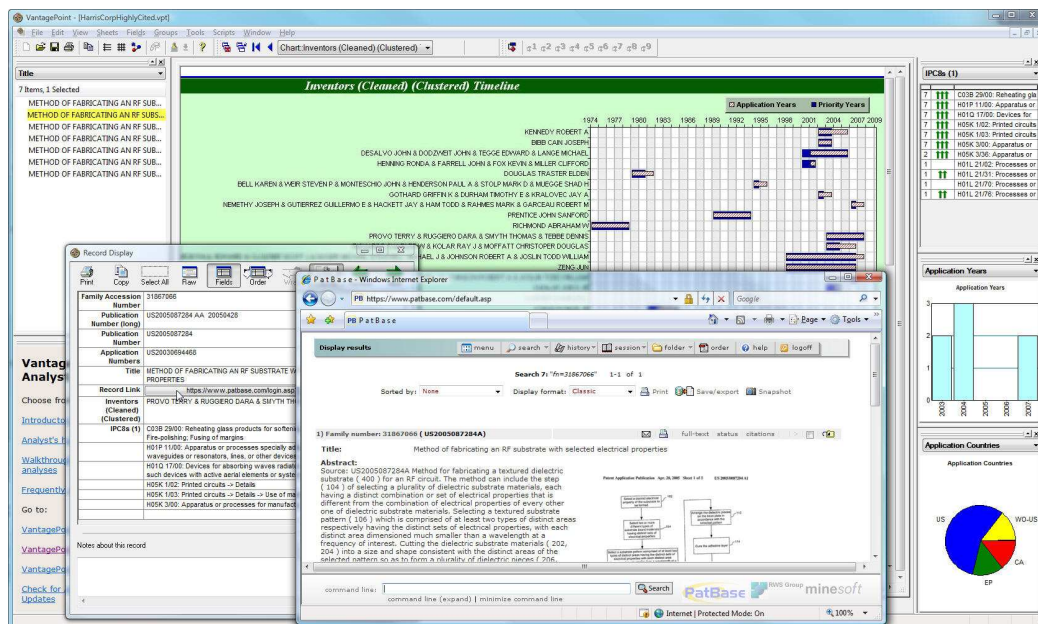
 **Advanced Classification Analysis**

Class	Frequency
<input type="checkbox"/> <b>A:</b> SECTION A HUMAN NEC...	129
<input type="checkbox"/> <b>A42:</b> HEADWEAR	3
<input type="checkbox"/> <b>A42B:</b> HATS	3
<input type="checkbox"/> <b>A42B1:</b> Hats	3
<input type="checkbox"/> <b>A42B1/00:</b> Hats	1
<input type="checkbox"/> <b>A42B1/22:</b> adjustable in size	1
<input type="checkbox"/> <b>A42B1/24:</b> with means for attac...	1
<input type="checkbox"/> <b>A63:</b> SPORTS	126
<input type="checkbox"/> <b>A63B:</b> APPARATUS FOR PHYSIC...	126
<input type="checkbox"/> <b>A63B37:</b> Solid balls	73
<input type="checkbox"/> <b>A63B37/00:</b> Solid balls	27
<input type="checkbox"/> <b>A63B37/02:</b> Special cores	10
<input type="checkbox"/> <b>A63B37/04:</b> Rigid cores	7
<input type="checkbox"/> <b>A63B37/06:</b> Elastic cores	7
<input type="checkbox"/> <b>A63B37/08:</b> Liquid cores	3
<input type="checkbox"/> <b>A63B37/12:</b> Special coverings	15
<input type="checkbox"/> <b>A63B37/14:</b> Special surfaces	4
<input type="checkbox"/> <b>A63B39:</b> Hollow non-inflatabl...	1
<input type="checkbox"/> <b>A63B39/00:</b> Hollow non-inflatabl...	1

## New Export format for VantagePoint Analysis tool

PatBase search results can be viewed and manipulated now using the VantagePoint Analysis software. VantagePoint quickly navigates through large volumes of the structured text in PatBase to see patterns and relationships, to gain a better understanding of patenting activities and developments. This means PatBase Users can export search results directly into VantagePoint. There is no need to reformat the results as the search set will be read by the software and will open directly in VantagePoint. Customers will require a VantagePoint license or demo version to view or use this feature.

For more information: <http://www.thevantagepoint.com/>



This adds to the third-party software compatibility that already exists with BizInt Smart Charts for Patents.

For more information: <http://www.bizcharts.com/>